



NATURAL ART CONCRETE

Natural Art Concrete Fence Ltd.

128-515 Wren Place, Kelowna, V1W 5H7

(P) 1-250-808-6991

www.titanfenceco.com



NATURAL ART SOUNDWALLS

- + Concrete Reflective Sound Barrier
- + Lightweight and Easy To Install
- + Maintenance Free and Sustainable



NATURAL ART CONCRETE FENCE

Email: info@titanfenceco.com

Call 1-250-808-6991

www.titanfenceco.com

About Us

Since 1997, Natural Art has been providing Sound mitigation and Privacy Solutions to clients everywhere.

Utilizing a revolutionary patented molding system, we produce a thinner, more versatile fence panel that exceeds quality control standards of other products on the market. Our products are capable of achieving up to a 50 year design life.

As an industry leader in Concrete Sound Walls, we are driven in providing you with the finest products and installation experience.




Natural Art Sound Wall utilizes the Canus Molding System to create a lightweight, and easy-to-install engineered product that maximizes sound reduction of environmental and ambient noise.

Our Solution Package Includes:

Engineering, Manufacturing, Installation, Project Management and Site Assistance

**For project planning and assistance call 1-250-808-6991
or email: info@titanfenceco.com**



Natural-Art-Concrete Reflective Wall
+ Concrete Reflective Sound Barrier Wall System
+ Blocks and Reflects Unwanted Noise
+ Tongue and Groove interlocking Connection
+ Various Design Pattern

Sound Transmission Class
Rating up to **STC 38**

- + Anti-Corrosion, Rust, Rot, and Stain
- + High Strength/Durability (min. 35 MPa compressive strength)
- + Impervious to rain, snow, ice and sleet
- + Maintenance-free
- + Wind Load Tested

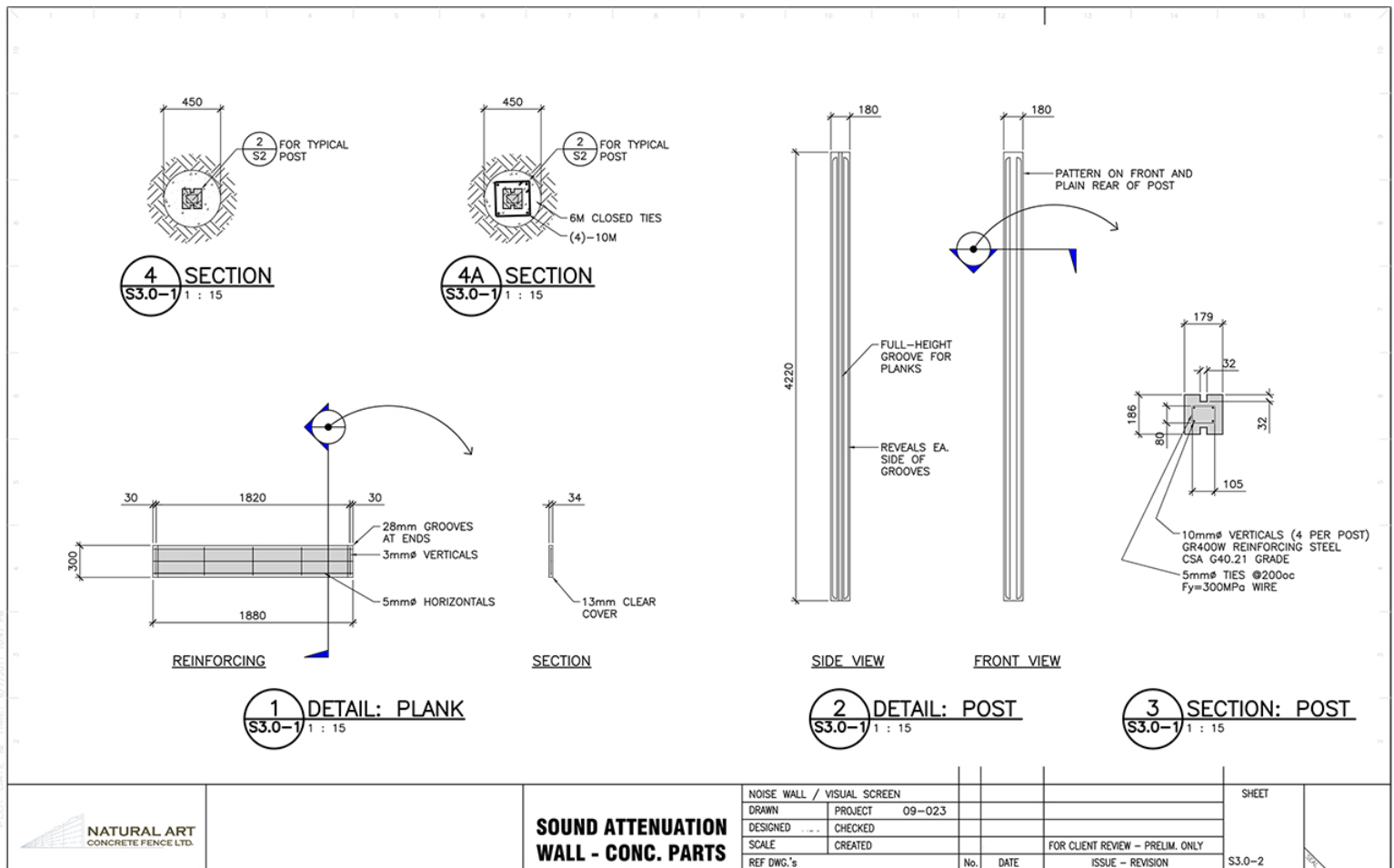


Up To
50 Years
Design Life

Engineered and Customized To Your Needs

No Matter the size, each project is different, and we will work with you to find the solutions right for you.

Our Sound Walls are customizable up to 15' (5 m) in height, and can be built to accommodate various bends and corners. We provide engineering solutions on a project specific basis and we offer a variety of customer support to ensure the job is done right.



Sound Wall Applications

- » Airports
- » Commercial Developments
- » Compressors/Generators
- » Construction Fencing
- » Equipment Enclosures or Screens
- » Highways and Bridges

- » Industrial Sites
- » Parking Lots
- » Railways
- » Residential Developments
- » Shopping Centers
- » Utility Stations

General Product Specification

Fence Height	Post	Dimension (cm)	Weight (kg)	Concrete Strength	Reinforcement	Panel	Dimension (cm)	Weight (kg)	Concrete Strength	Reinforcement
4 ft		14.5 x 16.5 x 165	50	35 MPa with 12 mm M.S.A	7M Rebars		(3 x 30 x 188) x 4	136	35 MPa with 8 mm M.S.A.	Steel mesh
5 ft		14.5 x 16.5 x 210	63	35 MPa with 12 mm M.S.A	7M Rebars		(3 x 30 x 188) x 5	170	35 MPa with 8 mm M.S.A.	Steel mesh
6 ft		14.5 x 16.5 x 240	72	35 MPa with 12 mm M.S.A	7M Rebars		(3 x 30 x 188) x 6	204	35 MPa with 8 mm M.S.A.	Steel mesh
7 ft		14.5 x 16.5 x 270	81	35 MPa with 12 mm M.S.A	7M Rebars		(3 x 30 x 188) x 7	238	35 MPa with 8 mm M.S.A.	Steel mesh
8 ft		18.5 x 18.5 x 330	250	35 MPa with 12 mm M.S.A	10M Rebars		(3 x 30 x 188) x 8	272	35 MPa with 8 mm M.S.A.	Steel mesh
9 ft		18.5 x 18.5 x 390	300	35 MPa with 12 mm M.S.A	10M Rebars		(3 x 30 x 188) x 9	306	35 MPa with 8 mm M.S.A.	Steel mesh
10 ft		18.5 x 18.5 x 420	320	35 MPa with 12 mm M.S.A	10M Rebars		(3 x 30 x 188) x 10	340	35 MPa with 8 mm M.S.A.	Steel mesh
11 ft		18.5 x 18.5 x 480	360	35 MPa with 12 mm M.S.A	10M Rebars		(3 x 30 x 188) x 11	374	35 MPa with 8 mm M.S.A.	Steel mesh
12 ft		22 x 22 x 540	500	35 MPa with 12 mm M.S.A	15M Rebars		(3 x 30 x 188) x 12	408	35 MPa with 8 mm M.S.A.	Steel mesh

General Info

Section Spacing for 4-7 feet height fence is 198 cm centre post to centre post
Section Spacing for 8-12 feet height fence is 201.5 cm centre post to centre post
Avg. Concrete Density: 2320 kg/m3
All fencing components are steel reinforced concrete.
Material designed to CSA A23.3 for reinforced concrete components
Steel mesh used in panels has $F_y = 250$ MPa with hot-dip galvanized coating conforming to CSA G30.5
Steel used to reinforce posts is clean uncoated (black) reinforcing bars conforming to CSA G30.18 Grade 400
Sound abatement properties conform to BC Ministry of Transportation memorandum of Sound Barrier Evaluation Criteria dated November 14, 2005.
Finished fence can be covered with approved concrete stain and/ or top coat sealant.

- *Concrete Strength can be customized to fit engineering requirements
- *Rebar reinforcement can be customized to fit engineering requirements





Special-Made Equipments for installation big or small. With or without lifting equipments.

Onsite Installation Guide and Technical Support.

Installation Made Easy.

Titan Fence Company Ltd.

128-515 Wren Place Kelowna, BC V1W 5H7

P: 1-250-808-6991

info@titanfenceco.com